

Print in Place Engine Benchmark - The Bengine



SunShine

[VIEW IN BROWSER](#)

updated 24. 5. 2022 | published 24. 5. 2022

Summary

This is my Print in Place Engine Benchmark! Its designed to test your 3D-printer! Check out the video on how it works,...

[Hobby & Makers](#) > [Other Ideas](#)

Tags: [benchmark](#) [engine](#) [inline](#) [motor](#) [test](#) [tolerance](#)

This is my Print in Place Engine Benchmark! Its designed to test your 3D-printer!

Check out the video on how it works, and how it was designed. [Update!! - V8 available here!](#)

[Update! - Easy to print 1-cyl version available here.](#)

[Update! V-Twin variant available here!](#)

See how it works, and how it was designed!:<https://youtu.be/DFjD8iOUx0I>

Important:

- Use 0.2mm layer height (or finer)
- Use a 0.4mm Nozzle (or finer)

-No Support

-No horizontal expansion compensation!

Please leave your questions and comments in the comment field, and I'll do my best to answer them.

Every like is appreciated! :)

Update! I have now a Partreon, chek it out! https://www.patreon.com/Turbo_SunShine

Check out my social media : [YouTube](#) [Facebook](#) [Instagram](#)

Print Settings

Resolution:

0.2mm

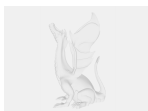
Category: 3D Printing

Model files



engine-benchmark.stl

Other files



test-features.pdf

[Find source .stl files on Thingiverse.com](#)

License ©

This work is licensed under a
Creative Commons (4.0 International License)



Attribution

- ✗ | Sharing without ATTRIBUTION
- ✓ | Remix Culture allowed
- ✓ | Commercial Use
- ✓ | Free Cultural Works
- ✓ | Meets Open Definition