



Cat scratch corner (can be filled with catnip!)



iluzion

[VIEW IN BROWSER](#)

updated 14. 1. 2024 | published 14. 1. 2024

Summary

a device that can be mounted on a corner, where cats can walk past it and scratch their cheeks. Fillable with catnip.



4.00 hrs



1 pcs



0.20 mm



0.40 mm



PLA



50 g



Other

[Household](#) > [Pets](#)

Tags: [pet](#) [cat](#) [corner](#) [cats](#) [pets](#) [scratcher](#)
[catscratching](#)

I created this model for my cat. Ive seen cat scratchers before but my cat seriously loves catnip. I thought about combining the two, so i made holes in the cones so it can be filled with catnip. It really works, you should try it. My cat loves it.

can be printed without support.

Update 01/14:

i did not expect this model to have this many downloads. I made this for my cat and just decided to put it here not thinking people would actually

download this.

This thing was not easy to fill at all, and i want to avoid the struggle for other people, I redesigned the model so that it can be filled in the pocket behind the curve.

I also made the holes bigger to make the catnip more exposed to your cat.

Model files



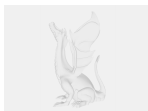
v2-cat-corner.stl

☐ updated design, easier to fill.



cat-corner.stl

☐ old design, requires to fill each small hole individually



cat-corner.ipt

☐ autodesk file for remixing

Print files



cat-corner.gcode

🌀 PLA 🌀 0.40 mm ≡ 0.20 mm ⌚ 4.00 hrs ⚖️ 50 g

☐ printing time depends on device, K1 prints in 1h50m and ender5 in 5h

License ©

This work is licensed under a
[Creative Commons \(International License\)](#)



Public Domain

✓ | Sharing without ATTRIBUTION

- ✓ | Remix Culture allowed
- ✓ | Commercial Use
- ✓ | Free Cultural Works
- ✓ | Meets Open Definition