



Simple Beveled Ring



UpstateDesigns

[VIEW IN BROWSER](#)

updated 19. 4. 2023 | published 19. 4. 2023

Summary

Simple beveled ring



0.25 hrs



1 pcs



0.16 mm



0.40 mm



PLA



2 g



Creality
Ender 3

[Fashion](#) > [Men](#)

Tags: [ring](#) [simple](#) [simplering](#)

I would love to see everybody's remixes.

The inside diameter is: 20mm

The outside diameter is: 25mm

I've uploaded the FreeCad file so its easier for you to edit the ring size.

Print settings:

I wouldn't recommend Prusa slicer for this model because it ends up printing weird for me i used Cura slicer.

Dynamic quality - 0.16mm

Wall line count: 4

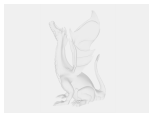
No infill

No supports

Model files



ring.stl



ring_freecad_model.fcstd

Print files



ring.gcode

⚙️ PLA ⚙️ 0.40 mm ⚙️ 0.16 mm ⌚ 0.25 hrs ⚖️ 2 g

License ©

This work is licensed under a
[Creative Commons \(4.0 International License\)](#)



Attribution-NonCommercial

- ✗ | Sharing without ATTRIBUTION
- ✓ | Remix Culture allowed
- ✗ | Commercial Use
- ✗ | Free Cultural Works
- ✗ | Meets Open Definition

