

Modular Spool Rack



MikeFlier

[VIEW IN BROWSER](#)

updated 24. 1. 2024 | published 24. 1. 2024

Summary

Modular rack for storing filament

[Hobby & Makers](#) > [Organizers](#)

Tags: [filament](#) [spoolholder](#) [filamentspoolholder](#) [storage](#)
[rack](#) [organizers](#) [filamentrack](#)

I had been storing my filament in sealed storage bins which became frustrating having to dig them out every time I searched for a specific color. I needed a solution particular to my available space but also wanted one I could adapt for other spaces.

I came up with this modular rack. It can be stretched or stacked as tall or wide as you like using the included support braces.

It was designed for 3/4 inch dowel rods. You may want to make a test part prior to printing an entire frame piece. The vertical rods are 196mm which provides a small amount of clearance for a 200mm spool.

#6 screws to fasten the frame to the rod. I recommend at least a 20mm or 1" screw length.

Mini caster wheels can be installed to the bottom for easy movement as desired.

I used these from Amazon. https://www.amazon.com/gp/product/B0BS287L8Q/ref=ppx_yo_dt_b_asin_title_o00_s00?ie=UTF8&th=1

Update 1: Now includes 3MF, STL and STEP files. New taller STL files for the bottom parts to prevent spools from sitting on the ground if not using casters.


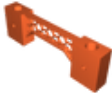


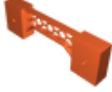
Update 2: Added stl's with middle parts that now go all the way across eliminating the need for almost all supports.

Update 3: Added stl's for a bottom row to hold small spools.

Update 4: Added stl's for all parts with triangle rather than honeycomb. Should print upside down and only need supports for the vertical post holes.

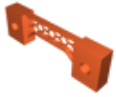
Assembly Video

Model files

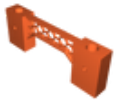
	STL's	16 files
	bottom-side.stl	
	bottom-middle-brace.stl	
	middle-sides.stl	
	top-sides.stl	



middle-middle-brace.stl



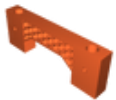
top-middle-brace.stl



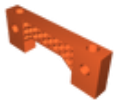
bottom-sides-tall.stl



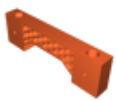
bottom-middle-braces-tall.stl



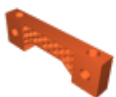
bottom-end-span.stl



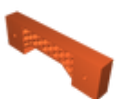
bottom-brace-span.stl



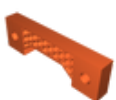
middle-end-span.stl



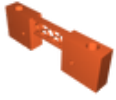
middle-brace-span.stl



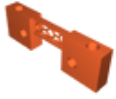
top-end-span.stl



top-brace-span.stl



bottom-row-side-small-spool.stl



bottom-row-brace-small-spool.stl



STEP's

6 files



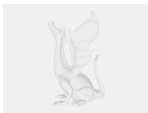
middle_outside.step



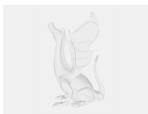
bottom_outside.step



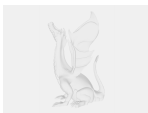
bottom_brace.step



middle_brace.step



top_brace.step

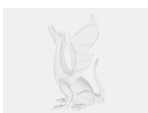


top_outside.step



3MF

1 file



modular-spool-rack.3mf



Spool Holder Triangles

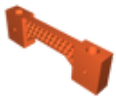
6 files



bottom-end-triangle.stl



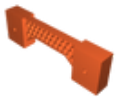
bottom-brace-triangle.stl



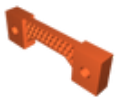
middle-end-triangle.stl



middle-brace-triangle.stl



top-end-triangle.stl



top-brace-triangle.stl



Metric Parts

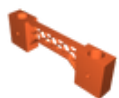
12 files



bottom-end-245mm.stl



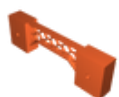
bottom-brace-245mm.stl



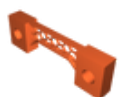
middle-end-245mm.stl



middle-brace-245mm.stl



top-end-245mm.stl



top-brace-245mm.stl



bottom-end-20_3mm.stl



bottom-brace-20_3mm.stl



middle-end-20_3mm.stl



middle-brace-20_3mm.stl



top-end-20_3mm.stl



top-brace-20_3mm.stl

License

This work is licensed under a
Creative Commons (4.0 International License)



Attribution-ShareAlike

- ✗ | Sharing without ATTRIBUTION
- ✓ | Remix Culture allowed
- ✓ | Commercial Use
- ✓ | Free Cultural Works
- ✓ | Meets Open Definition