



Print in place BALL bearings



Jerryie

[VIEW IN BROWSER](#)

updated 1. 10. 2023 | published 1. 10. 2023

Summary

Printable ball bearings as replacement parts for your hobby projects guys.

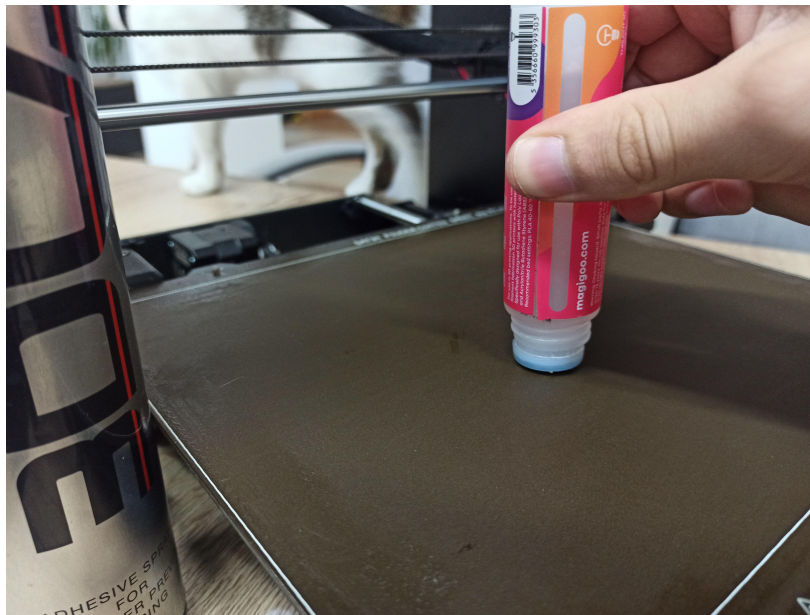
[Hobby & Makers](#) > [Mechanical Parts](#)

Tags: [printinplace](#) [bearing](#) [bearings](#) [ballbearing](#) [cattoy](#)

Quick tips for successful print:

- Use 3Dlac, glue stick, or Magigoo for better adhesion.

..or simply clean the bed with isopropyl



- Reduce flow rate to .95

Filament

● Color:

● Diameter:

● Extrusion multiplier:

●	<input type="text" value="1.75"/>	mm
●	<input type="text" value="0.95"/>	

- If you are experiencing difficulty with bearing rotation, don't worry it should loosen up and become much smoother over time, or add some lube.



- For best results, ensure the bed is not too close to the nozzle!

These dimensions:

8 x 22 x 7 mm -
608

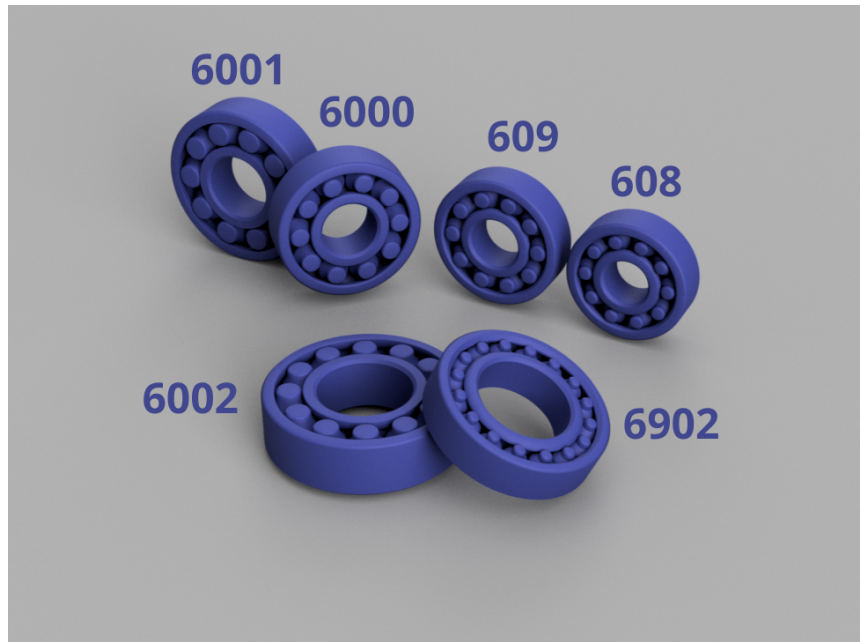
9 x 24 x 7 mm -
609

15 x 28 x 7 mm -
6902

10 x 26 x 8 mm -
6000

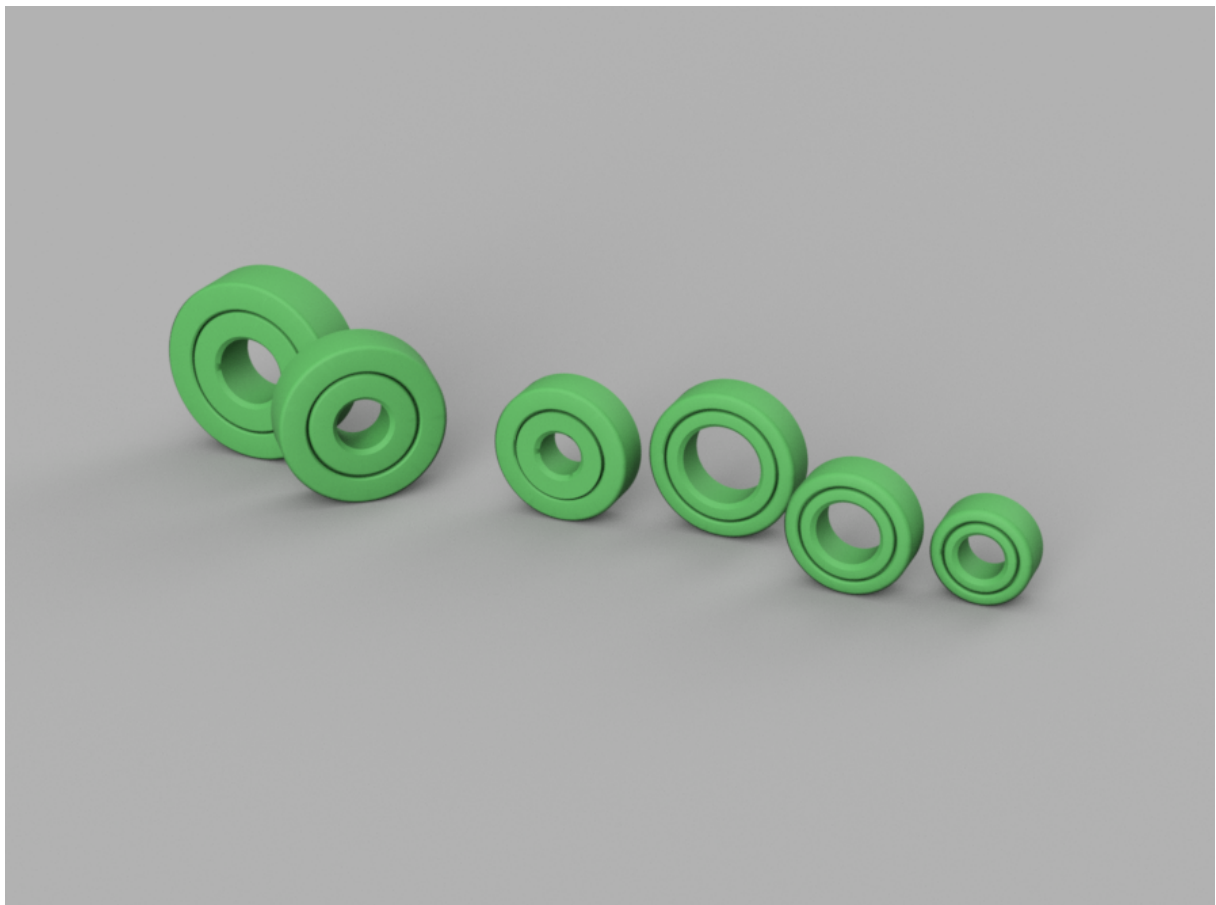
12 x 28 x 8 mm -
6001

15 x 32 x 9 mm-
6002



Print in place small bearing set:

<https://www.printables.com/model/542689-print-in-place-small-bearings>



Print in place bearing set:

<https://www.printables.com/cs/model/541192-print-in-place-bearings>



On the other hand, it is a good toy for a cat, what do you think?

This remix is based on



Print in place bearings

by Jerryie

Model files



Loose

6 files



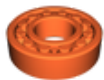
608_ball_loose.stl



609_bearing_loose.stl



6000_ball_loose.stl



6001_ball_loose.stl



6002_ball_loose.stl



6902_ball_loose.stl



Tight

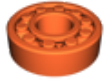
6 files



608_ball_tight.stl



609_ball_tight.stl



6000_ball_tight.stl



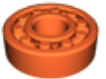
6001_ball_tight.stl



6002_ball_tight.stl



6902_ball_tight.stl



608_ball_default.stl



609_ball_default.stl



6000_ball_default.stl



6001_ball_default.stl



6902_ball_default.stl



6002_ball_default.stl

License

This work is licensed under a
[Creative Commons \(4.0 International License\)](#)



Attribution-ShareAlike

- ✗ | Sharing without ATTRIBUTION
- ✓ | Remix Culture allowed
- ✓ | Commercial Use
- ✓ | Free Cultural Works
- ✓ | Meets Open Definition