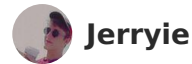




Print in place bearings



[VIEW IN BROWSER](#)

updated 29. 11. 2023 | published 29. 11. 2023

Summary

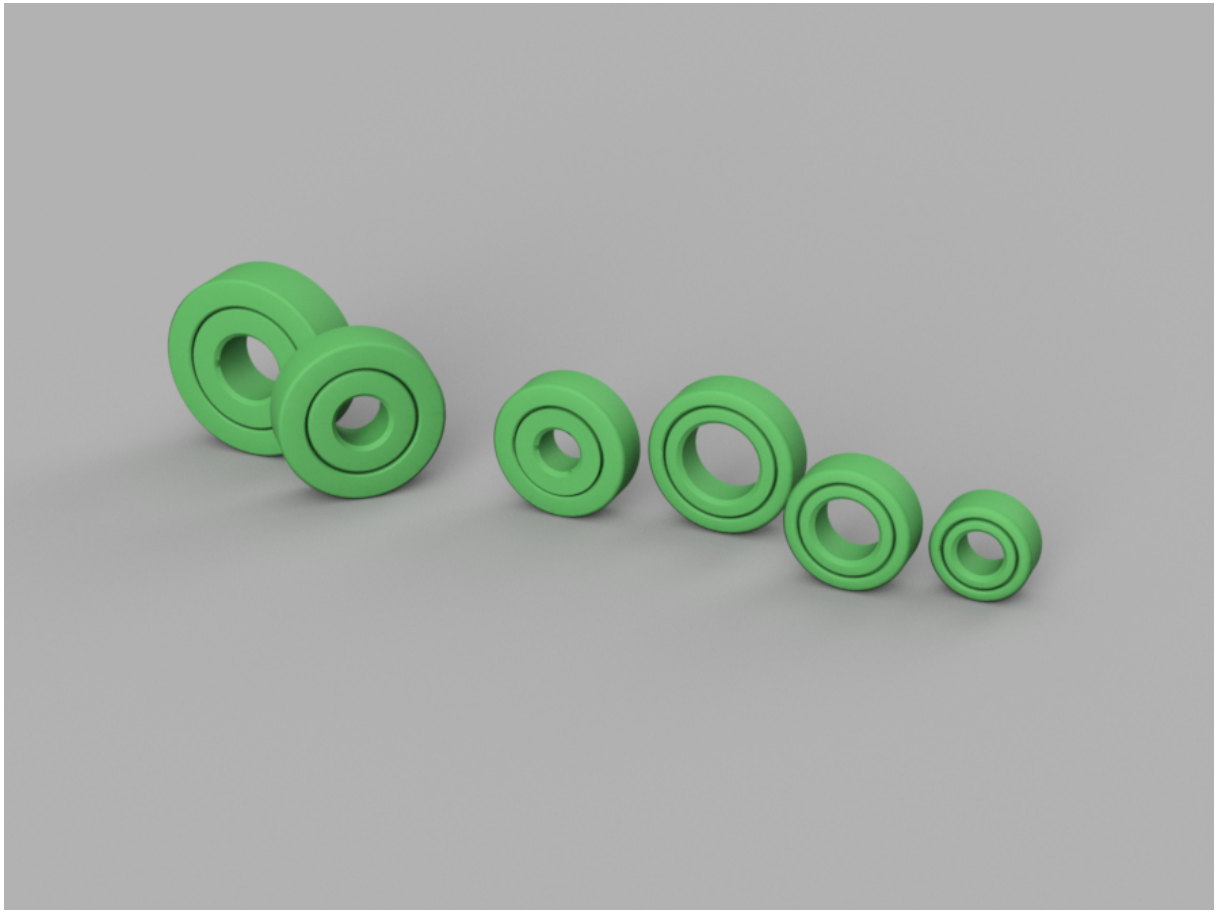
Bearings in common dimensions: 608, 609, 6902, 6000, 6001, 6002, and 6004. There's no need to assemble anything. Enjoy

[Hobby & Makers](#) > [Mechanical Parts](#)

Tags: [printinplace](#) [608](#) [bearings](#) [608bearing](#) [6001](#) [6000](#)
[6004](#) [6002](#) [ballfree](#) [609](#) [6902](#)

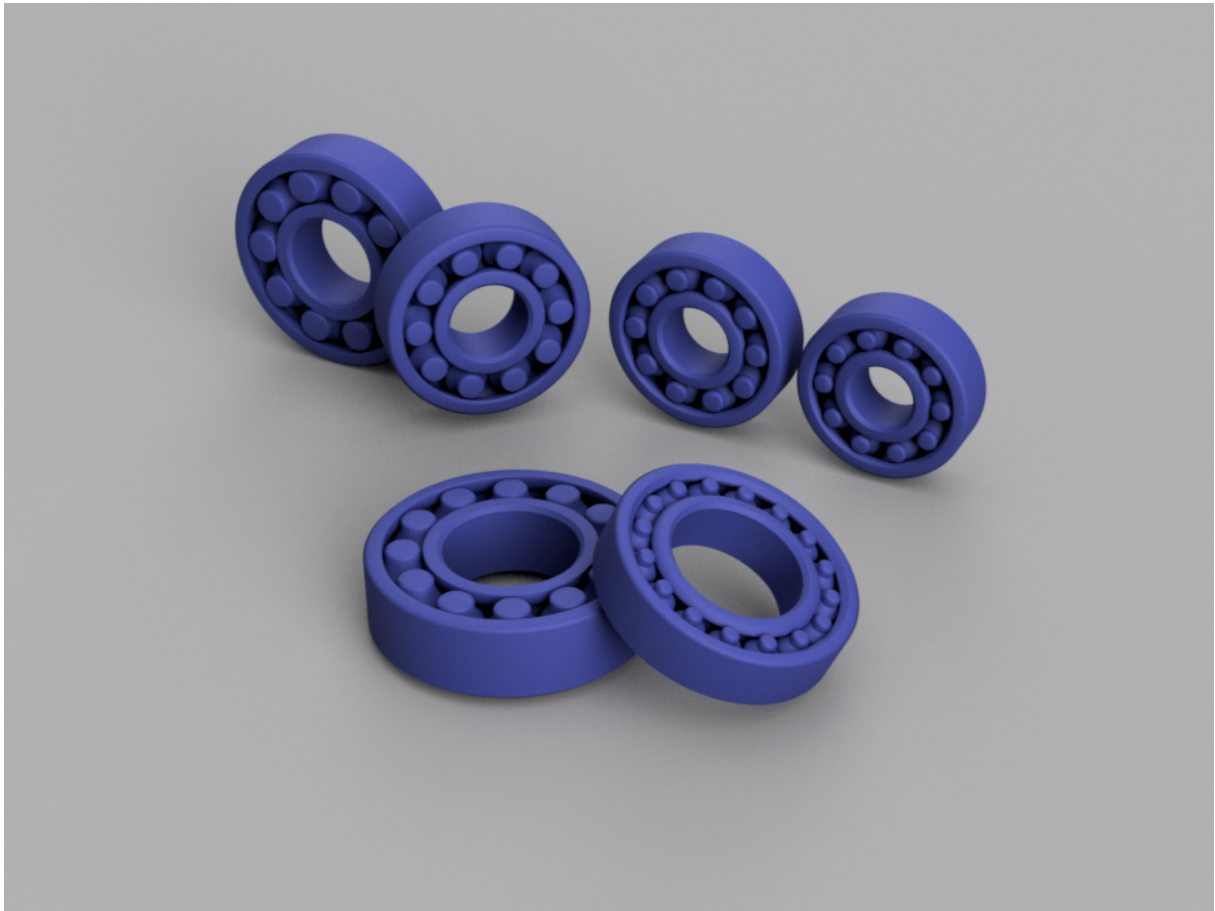
Print in place small bearing set:

<https://www.printables.com/model/542689-print-in-place-small-bearings>



Print in place BALL bearing set:

<https://www.printables.com/cs/model/583731-print-in-place-ball-bearings>



Thanks, 3Dprintsmith for his important testing work.

If you are experiencing difficulty with bearing rotation, don't worry it should loosen up and become much smoother over time, or add some lube.



For best results, ensure the bed is not too close to the nozzle!

There are versions available in these dimensions:

8 x 22 x 7 mm - 608

9 x 24 x 7 mm - 609

15 x 28 x 7 mm - 6902

10 x 26 x 8 mm - 6000

12 x 28 x 8 mm - 6001

15 x 32 x 9 mm- 6002

20 x 42 x 12 mm - 6004

If you I would like to download the Xbox One controller mini wheel that is pictured here: <https://www.thingiverse.com/thing:3049220>

Change log:

16 August 2023: As requested, I have created new versions for your applications. The latest versions are available in both tight and loose.

24 August 2023: I have included additional bearing options, 6001 and 6902.

Model files



Trailer 9t bearing

1 file



608.stl



Zetor_rear_bearing

1 file



zotor_rear_bearing.stl



Loose

7 files



608_bearing_loose.stl



609_bearing_loose.stl



6902_bearing_loose.stl



6000_bearing_loose.stl



6001_bearing_loose.stl



6002_bearing_loose.stl



6004_bearing_loose.stl



Tight

7 files



608_bearing_tight.stl



609_bearing_tight.stl



6902_bearing_tight.stl



6000_bearing_tight.stl



6001_bearing_tight.stl



6002_bearing_tight.stl



6004_bearing_tight.stl



608_bearing_default.stl



609_bearing_default.stl



6902_bearing_default.stl



6000_bearing_default.stl



6001_bearing_default.stl



6002_bearing_default.stl



6004_bearing_default.stl



6706-2rs_-especially_for_david_krammer.stl

License

This work is licensed under a
[Creative Commons \(4.0 International License\)](https://creativecommons.org/licenses/by-sa/4.0/)



Attribution-ShareAlike

✖ | Sharing without ATTRIBUTION

- ✓ | Remix Culture allowed
- ✓ | Commercial Use
- ✓ | Free Cultural Works
- ✓ | Meets Open Definition