

Modified and enlarged ducts for SV06+ and double 5015 fans.

S Steve

VIEW IN BROWSER

updated 4. 1. 2024 | published 4. 1. 2024

Summary

MISTRAL: Upgraded to 0.6 Volcano nozzle with klipper, needed to maximise cooling. Had two 5015 fans so what the hay.

[3D Printers](#) > [Other Printer Parts & Upgrades](#)

Tags: [cooling](#) [duct](#) [sv06plus](#)

Update:

- Rev2.3 z4.0mm and z2.0mm versions
 - z4.0mm suitable for Volcano nozzle and any other nozzle
 - z2.0mm only for Stock or similar (K1) nozzle
 - ducts moved a bit further from sock. Should be ok for PLA.
 - Redirected for more towards plastic to give bigger cooling spread.
- Rev2 - repositioned couple of the duct vanes that were out of position a bit
- Added a single 5015 fan connector, should be good for a decent single 5015 fan.
- Added modified LED mount
- Rev2.1 https://www.printables.com/@MaydayVFR_950289 requested some extra clearance. Added z4.0mm revision. Where z is height

above stock nozzle. A K1 is at +0.5, Volcano +2.5 in theory. In practise it varies i think my Volcano clearance is tighter.

Upgraded to 0.6 Volcano nozzle with klipper and needed to maximise cooling. Had two cheap 5015 fans so what the hay. Uses the same Ammonite mounts as I like the click on concept of this mount with option to bolt it on.

Redid the Amonite duct, which I liked, to take advantage of the extra room with the SV06+ head and give a bit more clearance. Also set level higher to suite shorter volcano nozzle. Standard nozzle might give better flow. Tried to keep a consistent area and prevent bends causing vortex's. The gap between the 5015 doesn't restrict flow.

I've managed a 22 minute benchy using the 0.6 nozzle with only minor quality loss. The bow is the cooling limit. I'm sure with more slicer optimising you could go under 20 and quicker with 0.4 nozzle.

- 0.75 walls to keep weight down and give 2wall thicknesses for toughness.
- Recommend Petg or better. PLA ok if only not printing at high temps.
- No supports.
- M3 panheads, countersunk or glue to join halves.
- Stiffened to reduce flex.

This remix is based on



The Amonite - Sovol SV06 Fan Duct Dual 5015 Blower Fan V4

by Leander Perez Blanco

Model files



fan_duct_airguide_r23_z40.stl

☐ z 4.0mm above stock nozzle to suite shorter Volcano, will work with stock nozzle



fan_duct_airguide_r23_z20.stl

☐ z 2.0mm above stock nozzle, not suitable for shorter Volcano



fan_duct_dual_fanconnector_r22.stl

☐ Dual 5015 fans

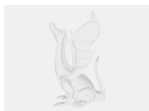


fan_connector_single5015_r2.stl

☐ Single 5015 Fan



fan_connector_single5015_r2.step



sv06-plus-vortex-led-mod10mm.step

☐ LED lighting mount

License ©



This work is licensed under a
[Creative Commons \(4.0 International License\)](#)

Attribution-NonCommercial

- ✗ | Sharing without ATTRIBUTION
- ✓ | Remix Culture allowed
- ✗ | Commercial Use
- ✗ | Free Cultural Works
- ✗ | Meets Open Definition