

Sovol SV06 10MM ROD MOD



Dustmuffins

[VIEW IN BROWSER](#)

updated 1. 8. 2023 | published 1. 8. 2023

Summary

A mod to add some extra support to the SV06 when printing at higher heights and faster speed.

[3D Printers](#) > [3D Printers - Upgrades](#)

Tags: sv06

This kit is remixed form many models. I was inspired by the Prusa MK4 using 10mm linear rods on the Z axis for a stiffer X axis, and set out to achieve the same thing with the SV06.

Things you will need:

- Drill and drill bits
- Hammer and allen wrenches
- [This tool](#) (or using the correct size socket works too)
- 2 x 10mmx400mm linear rods ([Got mine on Amazon](#))
- 2 x LM10LUU or 4x LM10UU bearings ([I used 2 of these](#). I hear the ones on amazon are bad quality)
- Assorted metric bolts and threaded inserts. 3mm, 4mm. You can get kits on Aliexpress and Amazon. You will not be able to reuse the x axis tensioner and will need to replace it with a longer M3 bolt.

Some tips:

- I recommend using a drill to make sure the holes are the correct size. The fit for the rods should be pretty tight so they don't flop around during printing.
- Mirror the top Z block in your slicer to get one for the other side
- Print in a high temperature material with 3-5 perimeters. I used ASA.
- I modified the Z axis motor mounts so the screws thread directly into the plastic. Modify the included STEP file if you'd prefer to use inserts.
- Any unintended slop in the linear rods can be taken up by putting a sliver of electrical tape on the end to make it fit tightly.

Instructions:

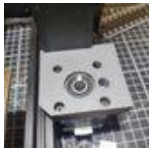
- Remove top Z blocks
- Remove Z axis linear rods
- X Axis
 - Remove x-axis assembly from Z-axis along with Z lead screws
 - Remove x-axis belt
 - remove X axis motor mount
 - Pull blocks from original rods
 - Insert new bearings ([this tool helps with installation and removal](#))
 - Install M3 heated inserts for pom nuts
 - Install M4 heated inserts for x axis motor mount
 - Press rods into original blocks (will probably require drilling for a tight fit)
 - Install x axis motor mount
 - Install x axis belt using new tensioner screw
- Z Stepper motor mounts
 - Drill holes to approx 3.5mm
 - Repeatedly thread an M4 bolt in and out of each hole to cut threads
 - Unplug and remove Z motors
 - Remove Z motor mounts
 - Install new motor mounts
 - reinstall Z motors
- Install 10mm Z rods
- Install Z lead screws (leave some space between them and the motor shaft)
- reinstall x axis on Z rods
- install top Z blocks

This remix is based on



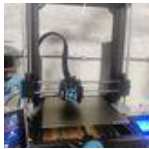
SV06 top z-axis rod fixing blocks (parametric)

by [blastrock](#)



SV06 stiffer Z motor bracket upgrade with adjustment

by [jaysopp](#)



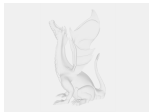
SOVOL SV06 stiffer X-axis blocks

by [jaysopp](#)

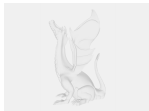
Model files



v4-top-z-guides.step



v5-x-axis-block-left-left-block.step



v2-x-axis-block-right-right-block.step



v2-10mm-z-bracket.step

License

This work is licensed under a
[Creative Commons \(4.0 International License\)](#)



Attribution-NonCommercial

- ✗ | Sharing without ATTRIBUTION
- ✓ | Remix Culture allowed
- ✗ | Commercial Use
- ✗ | Free Cultural Works
- ✗ | Meets Open Definition