

## SV06 5015 Fan Duct Rounded

 **NAM1025**

[VIEW IN BROWSER](#)

updated 4. 5. 2023 | published 4. 5. 2023

### Summary

Remix of <https://www.printables.com/model/361794-sv06-5015-part-cooling-duct> Rounded the Corners for better airflow.

[3D Printers](#) > [3D Printers - Upgrades](#)

Tags: [fan](#) [5015](#) [sv06](#) [duct](#) [5015fanduct](#)

This is just a remix of <https://www.printables.com/model/361794-sv06-5015-part-cooling-duct>.

I rounded the corners which could potentially give it better airflow. I saw someone request it in the original comments and figured I'd take a shot at it.

NOTE: I have not tested this yet. Will print when I swap back to PETG but wanted to share it.

Hardware:

2 - M3x20 bolts - Replace old bolts on print head assembly

1 - M3x12 bolt + nut - Secure the printed mount to the fan duct

1 - M4x25 bolt + nut - Secure the fan to the printed mount and fan duct

# This remix is based on



## SV06 5015 part cooling duct

by Scattered Collectables

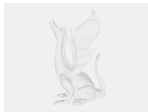
## Model files



sv06-5015-duct-rounded.stl



sv06-5015-duct-mount-v3.stl



sv06-5015-part-cooling-fan-setup-rounded.step

## License

This work is licensed under a  
[Creative Commons \(4.0 International License\)](#)



**Attribution—Noncommercial—Share Alike**

- 
- ✗ | Sharing without ATTRIBUTION
  - ✓ | Remix Culture allowed
  - ✗ | Commercial Use
  - ✗ | Free Cultural Works
  - ✗ | Meets Open Definition