



## White-tailed Deer Skull



[VIEW IN BROWSER](#)

updated 25. 1. 2024 | published 25. 1. 2024

### Summary

Very highly detailed model of a North American White-tailed deer skull



8.46 hrs



1 pcs



0.20 mm



0.40 mm



PLA



98 g



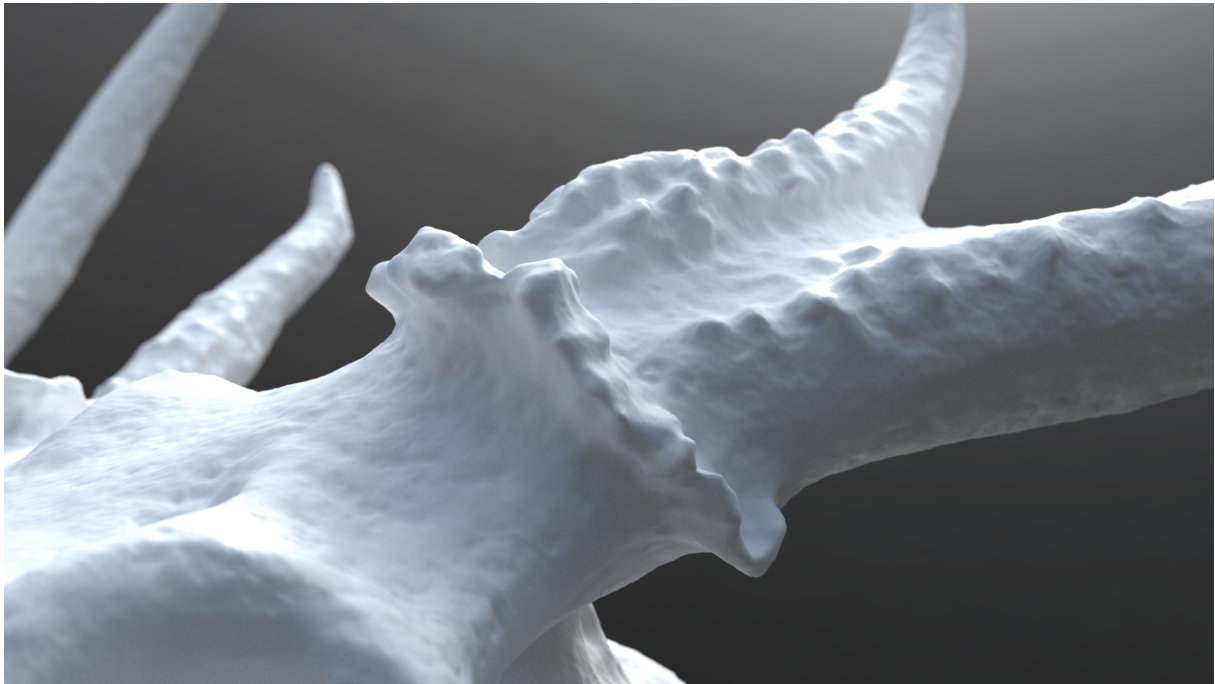
Prusa MK4

[World & Scans](#) > [Animals](#)

Tags: [3d](#) [detail](#) [skull](#) [photogrammetry](#) [scan](#) [white](#)  
[animal](#) [deer](#) [wild](#) [photo](#) [creature](#) [tail](#) [biology](#) [dead](#)  
[male](#) [bone](#) [nature](#) [antlers](#) [adult](#) [wildlife](#) [american](#)  
[antler](#) [natural](#) [north](#) [whitetailed](#) [tailed](#)

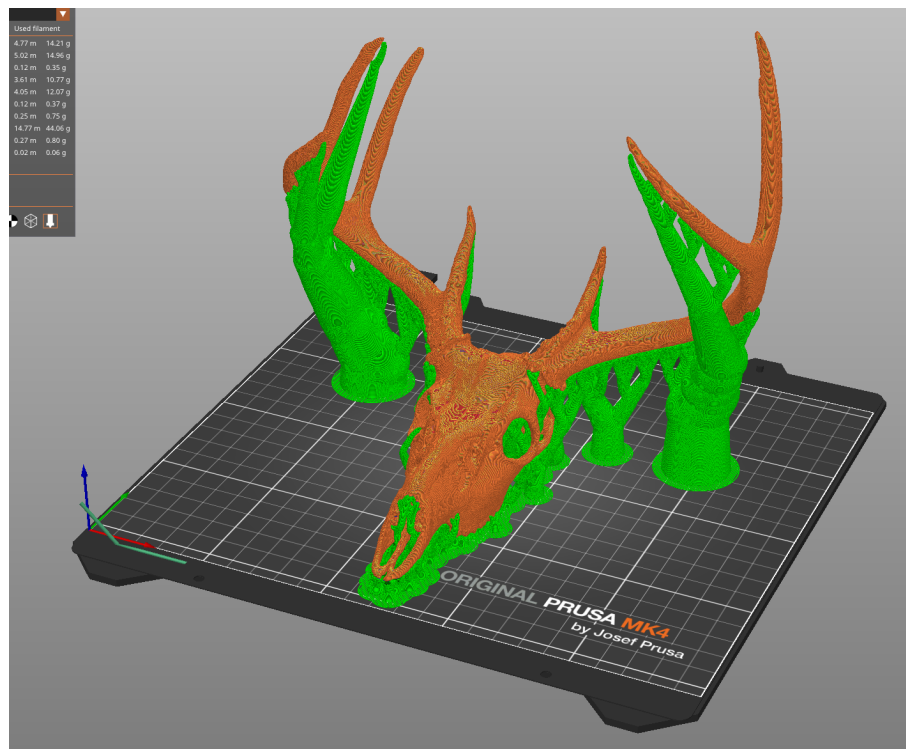
This is a very highly detailed model created using photogrammetry and manual detail sculpted in by studying the physical object. The subject scanned was a very large male white-tailed deer skull.

This model involved applying the use of a number of new programs that I've learned about lately. I'm very excited to share this with you as it is not only very different than what I typically create but is a really exciting model to print.



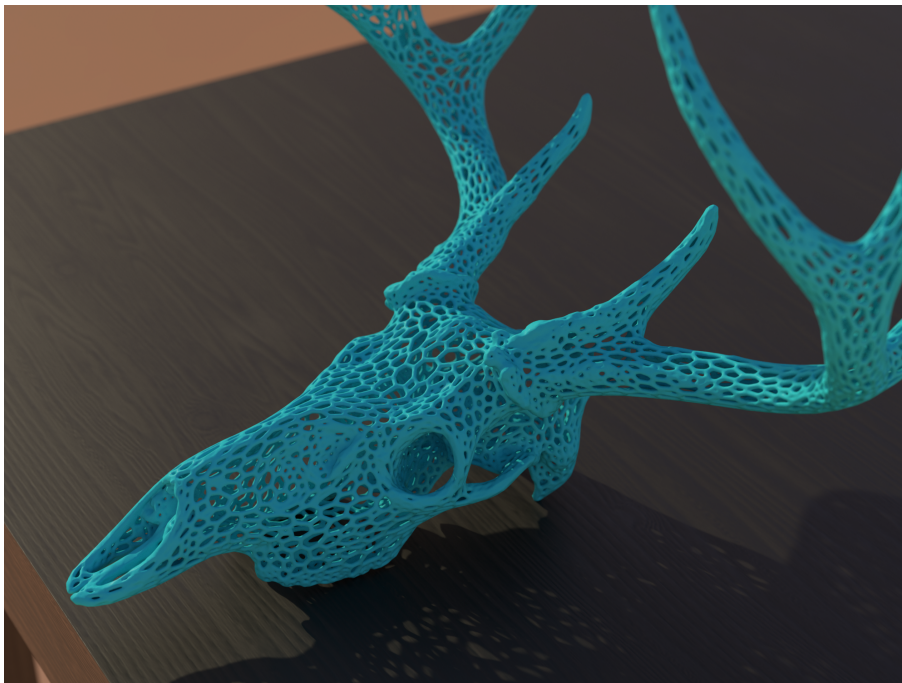
Simply Scale the print to fit your printer

Print the model using organic supports.

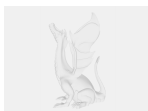


Download the Voronoi styled version of this model here:

## White-tailed Deer Skull - Voronoi Style



### Model files



**white-tailed-deer-skull.3mf**



**white-tailed-deer-skull.obj**

### Print files



**white-tailed-deer-skull\_04n\_02mm\_pla\_mk4is\_8h28m.bgcode**

🌀 PLA   📏 0.40 mm   ≡ 0.20 mm   ⌚ 8.46 hrs   ⚖️ 98 g   🖨️ Prusa MK4

# License ©

This work is licensed under a  
**Creative Commons (4.0 International License)**



## Attribution

---

- ✗ | Sharing without ATTRIBUTION
- ✓ | Remix Culture allowed
- ✓ | Commercial Use
- ✓ | Free Cultural Works
- ✓ | Meets Open Definition