

Filament sample card



MHX3D

[VIEW IN BROWSER](#)

updated 14. 6. 2023 | published 14. 6. 2023

Summary

Little cards for your filaments.



0.35 hrs



4 pcs



0.20 mm



0.40 mm



PLA
PET



6 g



Prusa MK4

[3D Printers](#) > [3D Printers - Upgrades](#)

Tags: [filament](#) [filamentsample](#) [testprint](#) [sample](#) [test card](#)

This is a remix of the Filament Card made by techsider <https://www.thingiverse.com/thing:4698734>


Adapted to the model from <https://www.printables.com/de/model/397581-rugged-filament-sample-box-remix>

How to Print the Labels

Step 1: Open the Provided .xlsx File.

Step 2: Adjust Data like in Picture Below, for the QR Code i used the Website <https://www.qrcode-generator.de/>.

The Image gets pasted right into the big Field on the Right.

	A	B	C	D	E	F	G
1							
2		PLA	PLA Prusa 1kg				
3			Galaxy Black				
4			Nozzle °C	215			
5			Bed °C	60			
6			Prusament				
7							
8							
9							
10							

Print settings:

- 0.2mm layer height
- 2 walls
- 12% infill

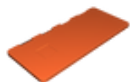
This remix is based on



Rugged filament sample box | Remix

by Kaksu3D

Model files



fila-card.3mf

Print files



fila-card_04n_02mm_pla_mk4_21m.gcode

⚙️ PLA ⚙️ 0.40 mm ⚙️ 0.20 mm ⌚ 0.35 hrs ⚖️ 6 g 🖨️ Prusa MK4



fila-card_04n_02mm_petg_mk4_22m.gcode

⚙️ PET ⚙️ 0.40 mm ⚙️ 0.20 mm ⌚ 0.36 hrs ⚖️ 6 g 🖨️ Prusa MK4



fila-card_02mm_pla_mk3s_25m.gcode

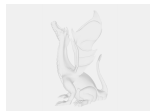
⚙️ PLA ⚙️ 0.40 mm ⚙️ 0.20 mm ⌚ 0.41 hrs ⚖️ 6 g 🖨️ Prusa MK3/S/S+



fila-card_02mm_petg_mk3s_25m.gcode

⚙️ PET ⚙️ 0.40 mm ⚙️ 0.20 mm ⌚ 0.42 hrs ⚖️ 6 g 🖨️ Prusa MK3/S/S+

Other files



filament_labels.zip

License

This work is licensed under a
[Creative Commons \(International License\)](#)



Public Domain

- ✓ | Sharing without ATTRIBUTION
- ✓ | Remix Culture allowed
- ✓ | Commercial Use

- ✓ | Free Cultural Works
- ✓ | Meets Open Definition