

[SV06 / SV06 Plus] Filament Guide for use with Dryer

 **DanSt3fan**

[VIEW IN BROWSER](#)

updated 11. 1. 2024 | published 11. 1. 2024

Summary

Filament guide to improve force needed to get the filament out of the dryer box.

[3D Printers](#) > [Other Printer Parts & Upgrades](#)

Having the filament dangle over the stock filament holder gave me a few problems regarding the flow rate, so I set to design this. It solved my problems as now there is constant tension on the filament and it is no longer rubbing on the printer corner.

I didn't really care about the tolerances of the parts, I just wanted it to work, if you want to modify this model to better suit your needs be my guest.

Assembly is pretty straight forward, remove the stock filament holder and replace it with the filament guide from below along with the filament holder center. The hole for the filament sensor has a 0.4mm wall to it so you will need to push the screw through it. The filament run-out sensor will mount with the 16 mm long M3 screw and with a washer, this is a tricky part use the tweezers.

For mounting the filament guide on the left side you will use 2 long zip ties and will position it that the gantry will not hit the zip ties and also it is aligned with the other pulley.

WILL NEED A HEAT GUN TO ASSEMBLE THE BEARING GUIDES!

You will need the following:

- 3 608 bearings
- 4 M3 screws, one is 16 mm long, the rest of them **over** 25 mm long,
- 4 M3 nuts
- 2 long zip ties




You will need to print the following parts:

- 1 Filament holder left
- 1 Filament holder center - choose whether it is for SV06 or the plus.
- 3 Bearing Spacer
- 3 Bearing Roller
- 1 Filament guide from the link below:

This model uses the following filament guide: <https://www.printables.com/model/411969-minimal-sv06-filament-guide-with-front-diagonal-sl>

Printed in 0.3 mm layer height.

Model files

STL		5 files
	bearing-spacer.stl	
	filament-holder-left.stl	
	bearing-roller.stl	



sv06_filament-holder-center.stl



sv06_plus-filament-holder-center-v2.stl

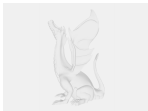


SOLIDWORKS Parts

5 files



bearing-roller.sldprt



bearing-spacer.sldprt



filament-holder-left.sldprt



sv06_filament-holder-center.sldprt



sv06_plus-filament-holder-center-v2.sldprt

License ©

This work is licensed under a
[Creative Commons \(4.0 International License\)](#)



Attribution

- ✗ | Sharing without ATTRIBUTION
- ✓ | Remix Culture allowed
- ✓ | Commercial Use
- ✓ | Free Cultural Works
- ✓ | Meets Open Definition