



Print In Place Box With Magnetic Closure



slavik kopanov

[VIEW IN BROWSER](#)

updated 29. 4. 2023 | published 29. 4. 2023

Summary

Print In Place Box With Magnetic Closure

[Hobby & Makers](#) > [Organizers](#)

Tags: [box](#) [organizer](#) [holder](#) [hinge](#) [printinplace](#) [magnetic](#)
[accessories](#) [magneticcase](#) [printin](#)

I designed this **Print In Place Box With Magnetic Closure** in SOLIDWORKS for the Printables **Models with Magnets** contest (21/04/2023).

It's an easy print, without supports, already orientated correctly, in STEP & STL & 3DM files .

You can personalize the box with text using the PrusaSlicer-2.6.0-alpha4 Text tool https://help.prusa3d.com/article/text-tool_399460

Printer: Artillery GENIUS PRO

Resolution: 0.20

PEI magnetic sheet

Filament brand: 3D Spider (local brand) PLA+ brown

Slicer: Prusa slicer

Design software: SOLIDWORKS

Enjoy!

(29/04/2023) Update:

Due to many requests, I reduced the tolerances in the boxes hinge, now its spouse to be Pretty tight.



Additional files:

Box_Tight Tolerance - (.3mf)/(.STEP)

Thank you all for the comments!

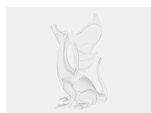
Model files



print-in-place-box-with-magnetic-closure.step



print-in-place-box-with-magnetic-closure.3mf



box_tight-tolerance.step



box_tight-tolerance.3mf

License ©

This work is licensed under a
GNU



General Public License v2.0

- ✗ | Sharing without ATTRIBUTION
- ✓ | Remix Culture allowed
- ✓ | Commercial Use
- ✓ | Meets Open Definition
- i | Share under the same license