



Print-in-Place Bag Clip 2 (Parametric)



neoyarus

[VIEW IN BROWSER](#)

updated 21. 7. 2022 | published 7. 7. 2022

Summary

A 30–250 mm set of bag clips with an improved hinge and an editable source file.



0.77 hrs



22 pcs



0.30 mm



0.40 mm



PLA
PET



12 g



Prusa
MK3/S/S+

[Household](#) > [Kitchen](#)

Tags: [clip](#) [hinge](#) [printinplace](#) [bags](#) [bagclip](#) [clips](#)
[hinged](#) [chipbagclip](#) [sustainability](#) [cerealsbagclip](#)
[strongbagclip](#)

What's new

- Redesigned hinges that feel solid and last a lot longer
- Reduced gap between the arms when closed
- An easy to edit source file for all your customization needs
- The clicky latch is now standard

How to print

I recommend you use PETG for its great bed adhesion and mechanical resilience. You could use PLA too, but beware that it will deform over time due to the pressure of whatever you're clamping constantly pushing the arms apart and eventually bending them slightly. If you do choose PLA, you can restore the clip to its original shape by compressing it with some kind of clamp and putting it in warm water for 10 minutes.

Common issues

The latch is too tight

- Try decreasing the extrusion multiplier in the slicer by 2-5% and printing again.

The latch is too loose

- Try increasing the extrusion multiplier in the slicer by 2-5% and printing again.

One or both hinges are fused at the bottom

- Try moving them carefully until they break free. The clip might still be savable.
- Make sure you bed is clean and parts of the hinge don't come off during printing.
- Make sure you are not printing too close to the bed

One or both hinges are fused all the way through

- Make sure you bed is clean and parts of the hinge don't come off during printing.
- Try decreasing the extrusion multiplier in the slicer by 2-5% and printing again.
- Try lowering the temperature by 5°C and printing again
- Try increasing the cooling

The gap between the arms is too wide

- Put the clip in hot water for 5 minutes (60-80 degrees depending on material). You can also use the heated bed for this step.
- Bend the arm that doesn't have the latch outwards a bit.
- After it cools off you'll get much better clamping forces

How to edit

If you want to make a custom-length clip, add imbedded magnets, or change the design entirely—download the .f3d file.

Changing the length:

1. Find the Change Parameters option in the Solid tab (it might be in the dropdown menu titled Modify).



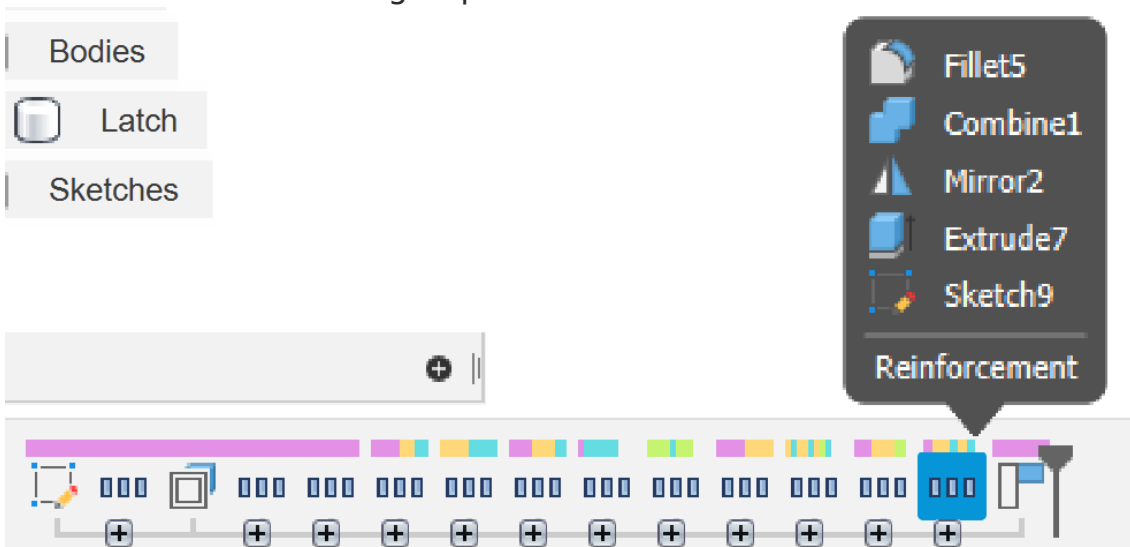
2. Find the cliplength parameter

Parameter	Name	Unit	Expression	Value	Comments
Favorites					
★ Bag clip 3 v9.Plane2.AlongDi...	thansition	mm	1.5 mm	1.50	
★ Bag clip 3 v9.Sketch8.Linear ...	Snappy_bit_protrusi...	mm	0.17 mm	0.17	
★ Inner arm.Extrude1.AlongDis...	cliplength	mm	50 mm	30.00	
★ Linear Dimension-2	gap	mm	0.3 mm	0.30	
★ User Parameter	clipwidth	mm	12 mm	12.00	
★ User Parameter	clipheight	mm	10 mm	10.00	
★ Linear Dimension-3	hingewidth	mm	(clipwidth - gap) / 4	2.975	
User Parameters					
★ User Parameter	clipwidth	mm	12 mm	12.00	
★ User Parameter	clipheight	mm	10 mm	10.00	
Model Parameters					
★ Linear Dimension-2	gap	mm	0.3 mm	0.30	
★ Linear Dimension-3	hingewidth	mm	(clipwidth - gap) / 4	2.975	
☆ Linear Dimension-4	d60	mm	gap	0.30	
☆ Linear Dimension-5	d61	mm	d60	0.30	
☆ Linear Dimension-6	d62	mm	d61	0.30	
☆ Linear Dimension-7	d63	mm	d62	0.30	

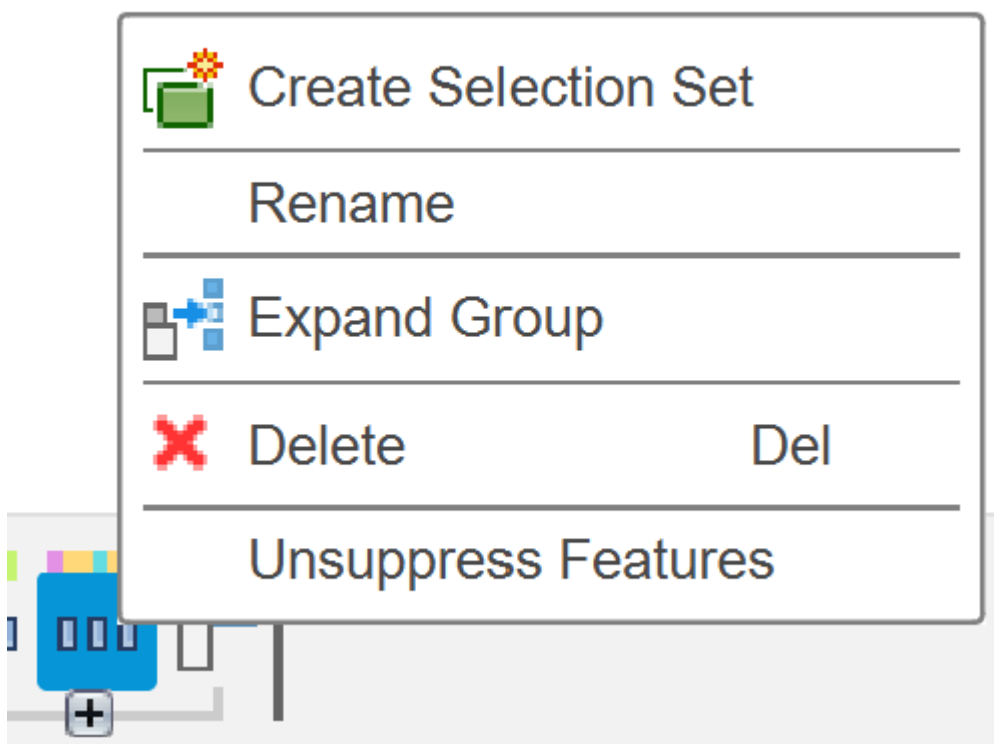
3. Enter the desired value in mm and press enter

Enabling/disabling arm reinforcements

1. Find the Reinforcement group in the timeline



2. Right click and select Suppress/Unsuppress Features



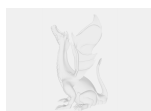
This remix is based on



Print-in-Place Bag Clip

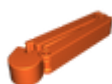
by neoyarus

Model files



print-in-place-bag-clip-2.f3d

☐ Parametric source file



30-mm-bag-clip-2.3mf

☐ Clicky latch, normal arms



50-mm-bag-clip-2.3mf

☐ Clicky latch, normal arms



80-mm-bag-clip-2.3mf

☐ Clicky latch, normal arms



100-mm-bag-clip-2.3mf

☐ Clicky latch, normal arms



120-mm-bag-clip-2.3mf

☐ Clicky latch, reinforced arms



140-mm-bag-clip-2.3mf

☐ Clicky latch, reinforced arms



160-mm-bag-clip-2.3mf

☐ Clicky latch, reinforced arms



180-mm-bag-clip-2.3mf

☐ Clicky latch, reinforced arms



200-mm-bag-clip-2.3mf

☐ Clicky latch, reinforced arms



250-mm-bag-clip-2.3mf

☐ Clicky latch, reinforced arms

Print files



PLA gcode

11 files



30-mm-bag-clip-2_03mm_pla_mk3s_23m.gcode

⚙️ PLA ⚙️ 0.40 mm ⚙️ 0.30 mm ⌚ 0.38 hrs ⚖️ 6 g 🖨️ Prusa MK3/S/S+



50-mm-bag-clip-2-v10_03mm_pla_mk3s_30m.gcode

⚙️ PLA ⚙️ 0.40 mm ⚙️ 0.30 mm ⌚ 0.50 hrs ⚖️ 8 g 🖨️ Prusa MK3/S/S+



80-mm-bag-clip-2_03mm_pla_mk3s_39m.gcode

⚙️ PLA ⚙️ 0.40 mm ⚙️ 0.30 mm ⌚ 0.65 hrs ⚖️ 10 g 🖨️ Prusa MK3/S/S+



100-mm-bag-clip-2_03mm_pla_mk3s_46m.gcode

⚙️ PLA ⚙️ 0.40 mm ⚙️ 0.30 mm ⌚ 0.77 hrs ⚖️ 13 g 🖨️ Prusa MK3/S/S+



120-mm-bag-clip-2_03mm_pla_mk3s_1h0m.gcode

⚙️ PLA ⚙️ 0.40 mm ⚙️ 0.30 mm ⌚ 1.01 hrs ⚖️ 16 g 🖨️ Prusa MK3/S/S+



140-mm-bag-clip-2_03mm_pla_mk3s_1h8m.gcode

⚙️ PLA ⚙️ 0.40 mm ⚙️ 0.30 mm ⌚ 1.14 hrs ⚖️ 19 g 🖨️ Prusa MK3/S/S+



160-mm-bag-clip-2_03mm_pla_mk3s_1h16m.gcode

⚙️ PLA ⚙️ 0.40 mm ⚙️ 0.30 mm ⌚ 1.27 hrs ⚖️ 21 g 🖨️ Prusa MK3/S/S+



180-mm-bag-clip-2_03mm_pla_mk3s_1h24m.gcode

⚙️ PLA ⚙️ 0.40 mm ⚙️ 0.30 mm ⌚ 1.40 hrs ⚖️ 23 g 🖨️ Prusa MK3/S/S+



200-mm-bag-clip-2_03mm_pla_mk3s_1h32m.gcode

🌀 PLA 📏 0.40 mm 📏 0.30 mm ⌚ 1.53 hrs ⚖️ 26 g 📄 Prusa MK3/S/S+



250-mm-bag-clip-2_03mm_pla_mk3s_1h44m.gcode

🌀 PLA 📏 0.40 mm 📏 0.30 mm ⌚ 1.73 hrs ⚖️ 32 g 📄 Prusa MK3/S/S+



30-250-mm-bag-clip-2-set_03mm_pla_mk3s_10h4m.gcode

🌀 PLA 📏 0.40 mm 📏 0.30 mm ⌚ 10.07 hrs ⚖️ 178 g 📄 Prusa MK3/S/S+



PETG gcode

11 files



30-mm-bag-clip-2_03mm_petg_mk3s_23m.gcode

🌀 PET 📏 0.40 mm 📏 0.30 mm ⌚ 0.38 hrs ⚖️ 5 g 📄 Prusa MK3/S/S+



50-mm-bag-clip-2-v10_03mm_petg_mk3s_30m.gcode

🌀 PET 📏 0.40 mm 📏 0.30 mm ⌚ 0.50 hrs ⚖️ 7 g 📄 Prusa MK3/S/S+



80-mm-bag-clip-2_03mm_petg_mk3s_39m.gcode

🌀 PET 📏 0.40 mm 📏 0.30 mm ⌚ 0.66 hrs ⚖️ 10 g 📄 Prusa MK3/S/S+



100-mm-bag-clip-2_03mm_petg_mk3s_46m.gcode

🌀 PET 📏 0.40 mm 📏 0.30 mm ⌚ 0.77 hrs ⚖️ 12 g 📄 Prusa MK3/S/S+



120-mm-bag-clip-2_03mm_petg_mk3s_1h1m.gcode

🌀 PET 📏 0.40 mm 📏 0.30 mm ⌚ 1.01 hrs ⚖️ 16 g 📄 Prusa MK3/S/S+



140-mm-bag-clip-2_03mm_petg_mk3s_1h9m.gcode

PET 0.40 mm 0.30 mm 1.15 hrs 18 g Prusa MK3/S/S+



160-mm-bag-clip-2_03mm_petg_mk3s_1h16m.gcode

PET 0.40 mm 0.30 mm 1.27 hrs 20 g Prusa MK3/S/S+



180-mm-bag-clip-2_03mm_petg_mk3s_1h24m.gcode

PET 0.40 mm 0.30 mm 1.40 hrs 23 g Prusa MK3/S/S+



200-mm-bag-clip-2_03mm_petg_mk3s_1h32m.gcode

PET 0.40 mm 0.30 mm 1.54 hrs 25 g Prusa MK3/S/S+



250-mm-bag-clip-2_03mm_petg_mk3s_1h46m.gcode

PET 0.40 mm 0.30 mm 1.77 hrs 31 g Prusa MK3/S/S+



30-250-mm-bag-clip-2-set_03mm_petg_mk3s_10h12m.gcode

PET 0.40 mm 0.30 mm 10.21 hrs 173 g Prusa MK3/S/S+

License ©

This work is licensed under a
[Creative Commons \(4.0 International License\)](#)



Attribution-ShareAlike

- ✗ | Sharing without ATTRIBUTION
- ✓ | Remix Culture allowed
- ✓ | Commercial Use
- ✓ | Free Cultural Works

✓ | Meets Open Definition