

Sovol SV06 plastic parts replacements

M **Mintor94**

[VIEW IN BROWSER](#)

updated 13. 10. 2023 | published 13. 10. 2023

Summary

Sovol SV06 plastic parts replacements

[3D Printers](#) > [Other Printer Parts & Upgrades](#)

Tags: [replacementparts](#) [sovol](#) [sovolsv06](#)

These are replacements for Sovol SV06 original plastic parts. I wasn't really a big fan SV06 blue color scheme, so changed it to grey. Every part was designed by me, using Sovol's official STLs as a reference.

I'm not really a big fan of heat inserts, so I use nuts to hold screws where necessary.

Some notes regarding individual parts:

You can add 608ZZ bearings to top Z axis covers, but they may not be necessary and even do more harm than good and increase wobbling artifacts instead of removing them.

Extruder mounts needed a bit of redesign to make the front part more easily printable. you'll need 6 M3 nuts and ~ 14 mm M3 screws to connect them together, and 3 M3 nuts and ~ 6 mm M3 screws to connect the extruder. (you can use original hex screws) Back mounted alternative fan

shrouds for 4020 and 5015 blowers should be compatible, use ~ 20 mm M3 screws to mount them.

The X axis motor mount is mounted to the X axis left mount block with 2 ~ 20 mm M3 screws, and 2 M3 nuts (original screws incompatible!) and up to 4 ~ 6 mm M3 screws to connect the motor (you can use original screws). to mount blocks to the Z Axis yo'll need 4 M3 nuts and ~14 mm screws.

For x axis mounts, insert the bearings from the top. (the side where the mounts for Z rods are) Just to warn you, force needed to do so may seem unreasonable. The same applies to inserting X axis linear rods.

Disclaimer & Warning:

Be warned, that you use these replacements on your own risk and I'm not responsible if you damage your printer in the result of using them. It will be a while until I iron out all issues connected to the design of these parts and I may even not be aware about all of them ever.

If you notice an issue or have improvement proposal, feel free to contact me or remix the part yourself.

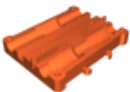
Model files



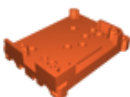
z-axis-top-cover-left.stl



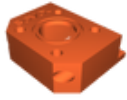
z-axis-top-cover-right.stl



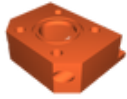
extruder-mount-back.stl



extruder-mount-front.stl



x-axis-motor-mount-sovol-text.stl



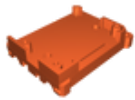
x-axis-motor-mount-plain.stl



x-axis-mount-right.stl



x-axis-mount-left.stl



extruder-mount-front-old.stl

License ©

This work is licensed under a
[Creative Commons \(4.0 International License\)](#)



Attribution-NonCommercial

- ✗ | Sharing without ATTRIBUTION
- ✓ | Remix Culture allowed
- ✗ | Commercial Use
- ✗ | Free Cultural Works
- ✗ | Meets Open Definition