



Spool Holder remix for Sovol SV06 and SV06 Plus



bulbasaur0

[VIEW IN BROWSER](#)

updated 4. 12. 2023 | published 4. 12. 2023

Summary

A remix of rogerquin's excellent locking spool holder which mounts over the original Sovol SV06 spool barrel

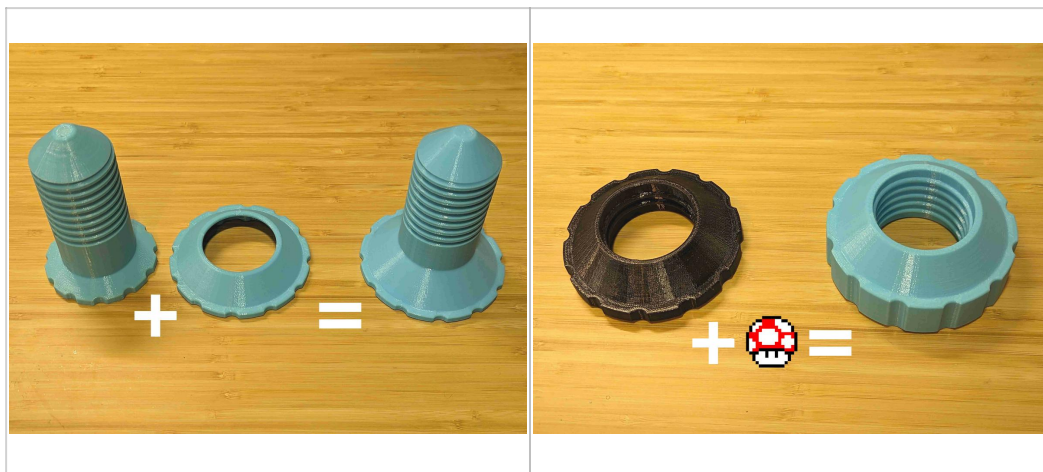
[3D Printers](#) > [Other Printer Parts & Upgrades](#)

Tags: [spool](#) [filament](#) [spoolholder](#) [filamentspoolholder](#)
[spoolmount](#) [filamentholder](#) [sovol](#) [sv06](#) [sovolsv06](#)
[sv06plus](#) [sovolsv06plus](#)



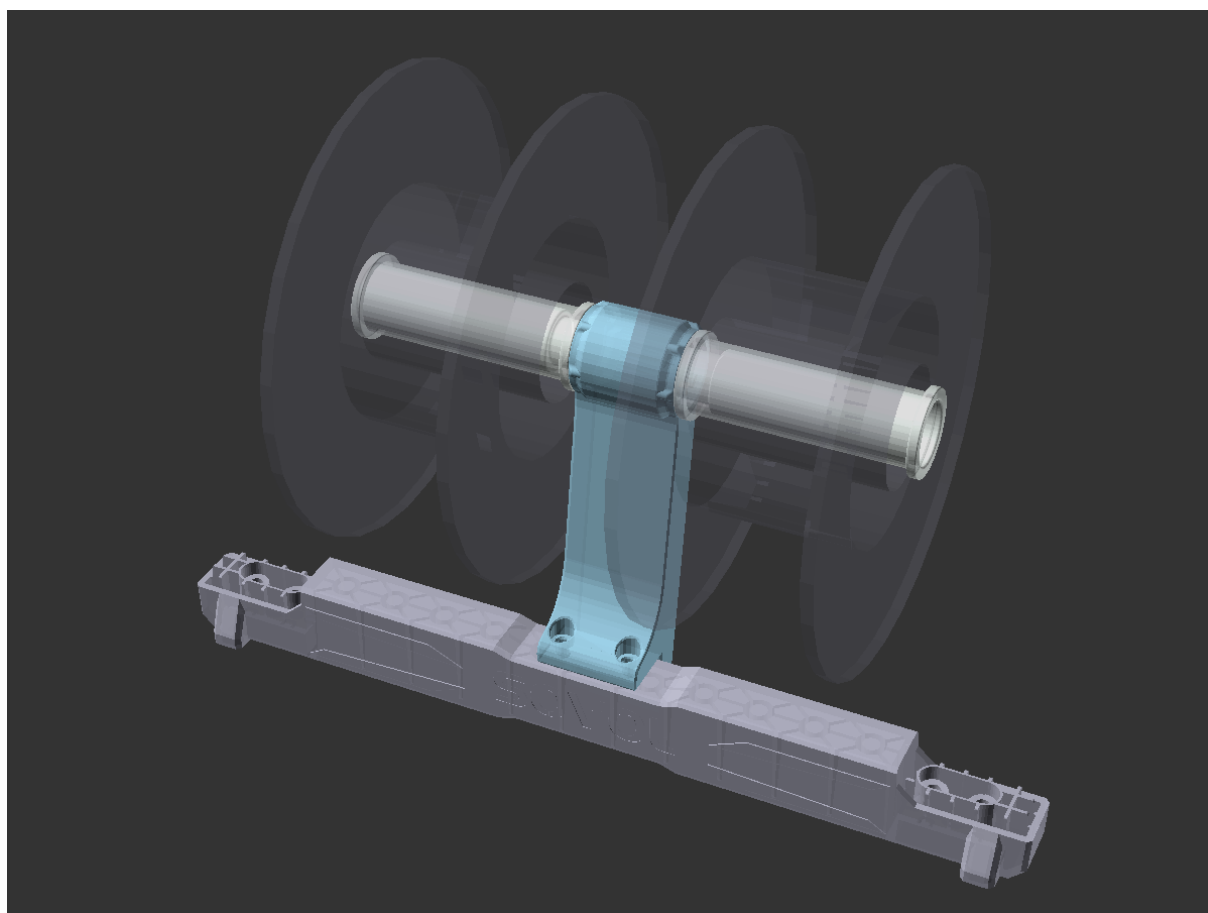
[VIEW CODE ON GITHUB](#)

I've been using [rogerquin's most excellent spool holder for the Sovol SV06 \(Plus\)](#). I wanted to make the grip easier and compatible with any of my spools, so I made two changes to rogerquin's original model. First, I combined the spool barrel with the Sunlu barrel adapter into a single piece. Then, I extended the large diameter (Sunlu) nut for an easier grip.



Recommended pairing

As pictured, this model pairs well with [my dual spool holder](#)!



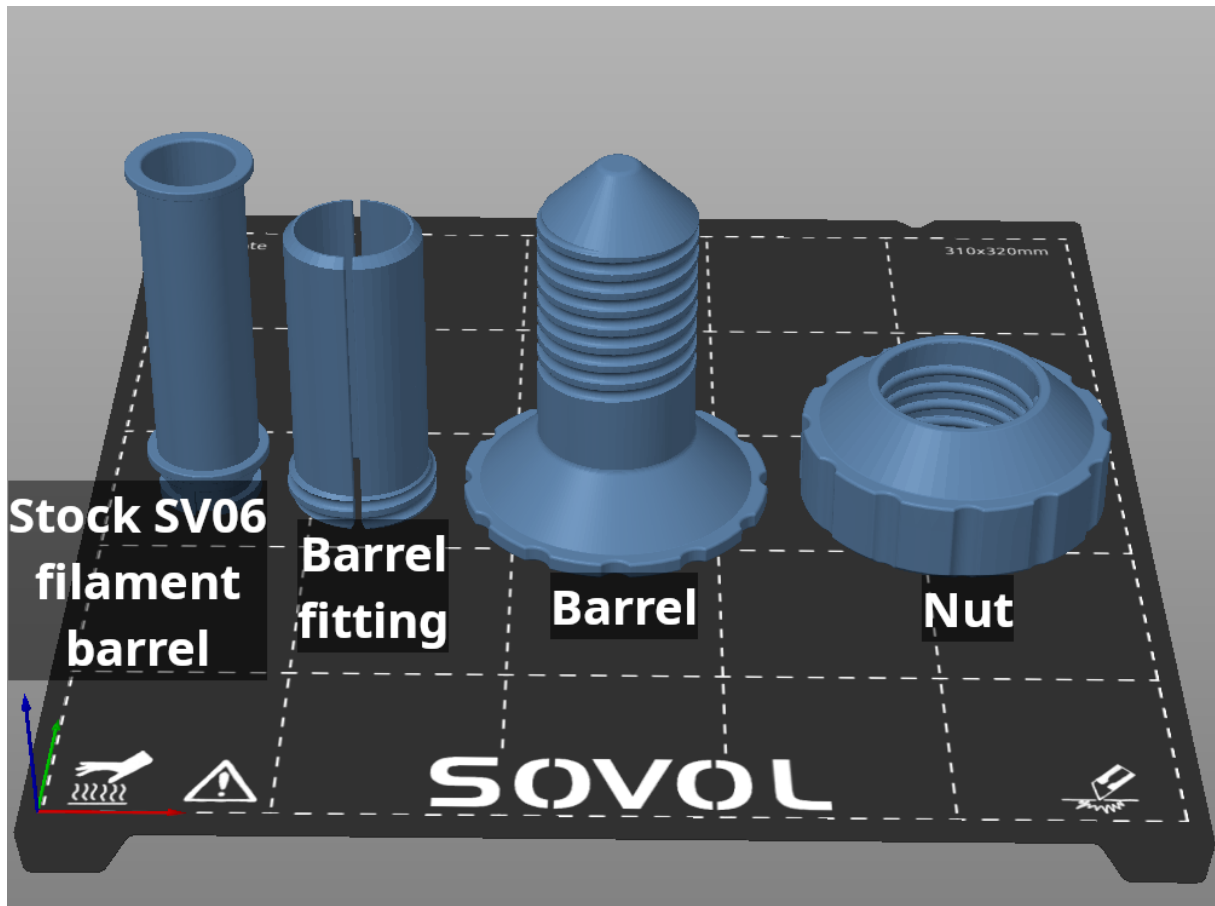
Parts

This model is fully printable, no additional hardware is needed.

Compatibility note: The spool holder is specifically sized to fit over the stock **SV06** filament barrel. The stock filament barrel on the **SV06 Plus** has a larger end cap and is not compatible -- but the SV06 filament barrel (model included!) can simply be printed and used in its place.

The parts to print are all included:

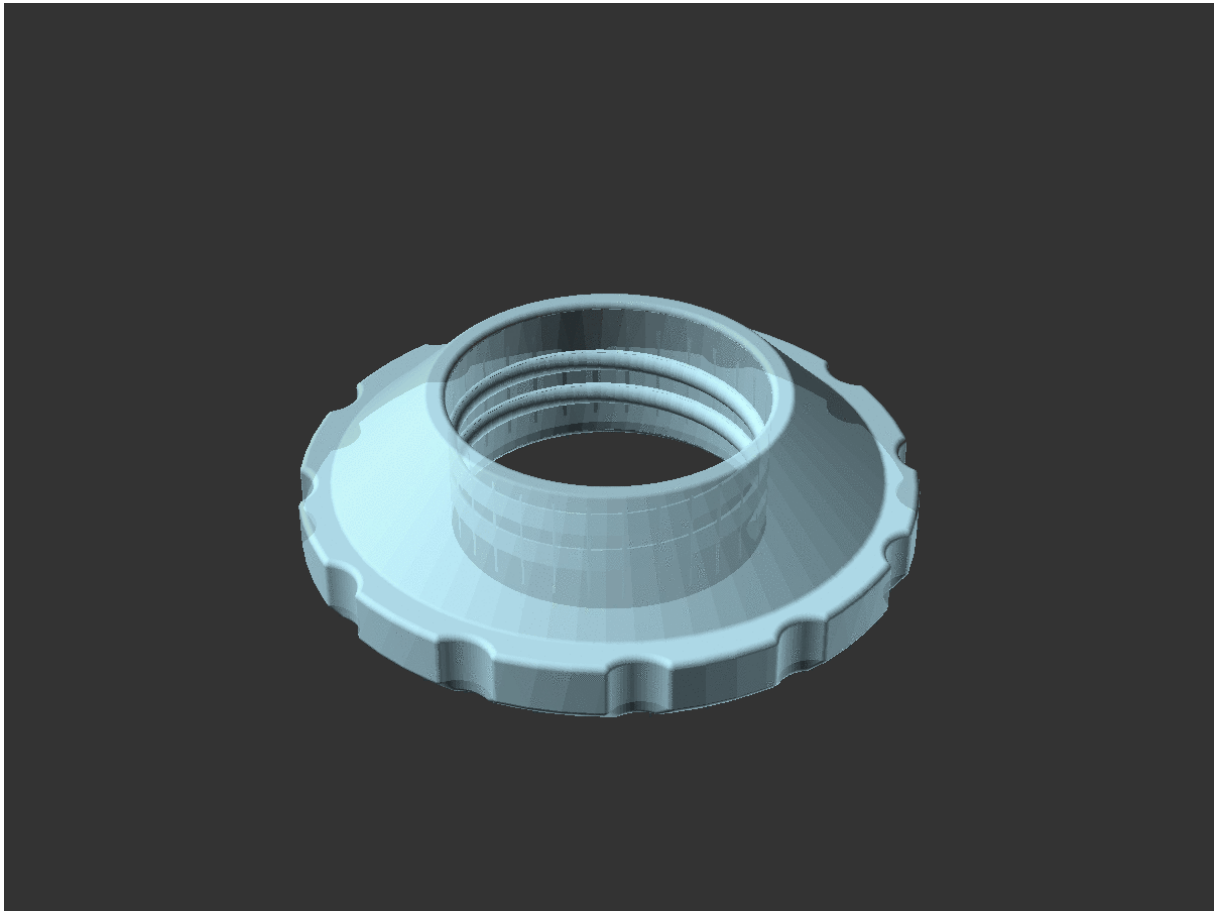
- SV06 filament barrel (if not using the stock SV06 filament barrel). The included copy is slightly modified from the original, so that it can be printed without supports.
- Spool holder barrel fittings
- Spool holder barrel
- Spool holder nut



If you are using **my dual spool holder**, you'll need two sets of each part.

Spool holder nut configuration

The spool holder nut in the published model is 15mm longer than the original. This is configurable in the OpenSCAD model if you prefer a different length.



Printing

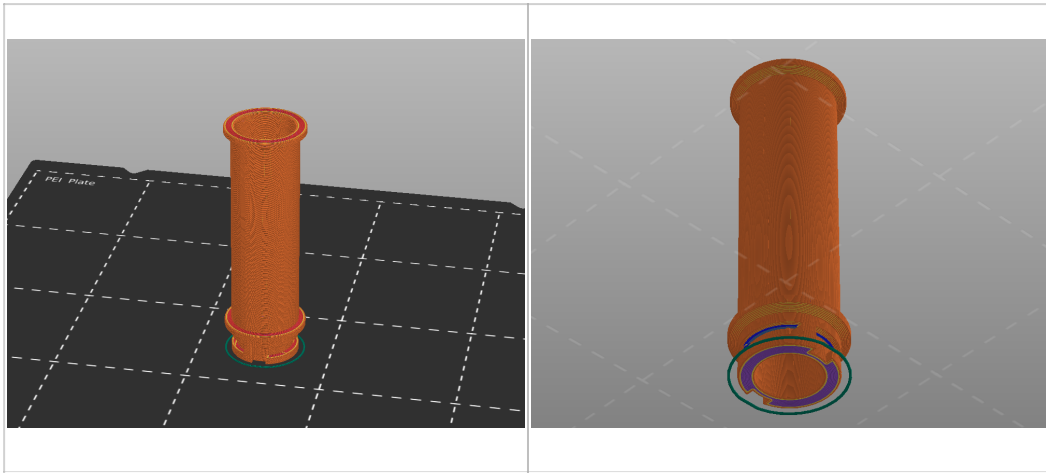
All of these parts print as oriented in the model files (upright). No supports are needed for any of the parts. The stock filament barrel model and the spool barrel fittings may need a brim, depending on your bed adhesion.

Concentric top and bottom infill patterns make a nice aesthetic for these parts, but this is optional.

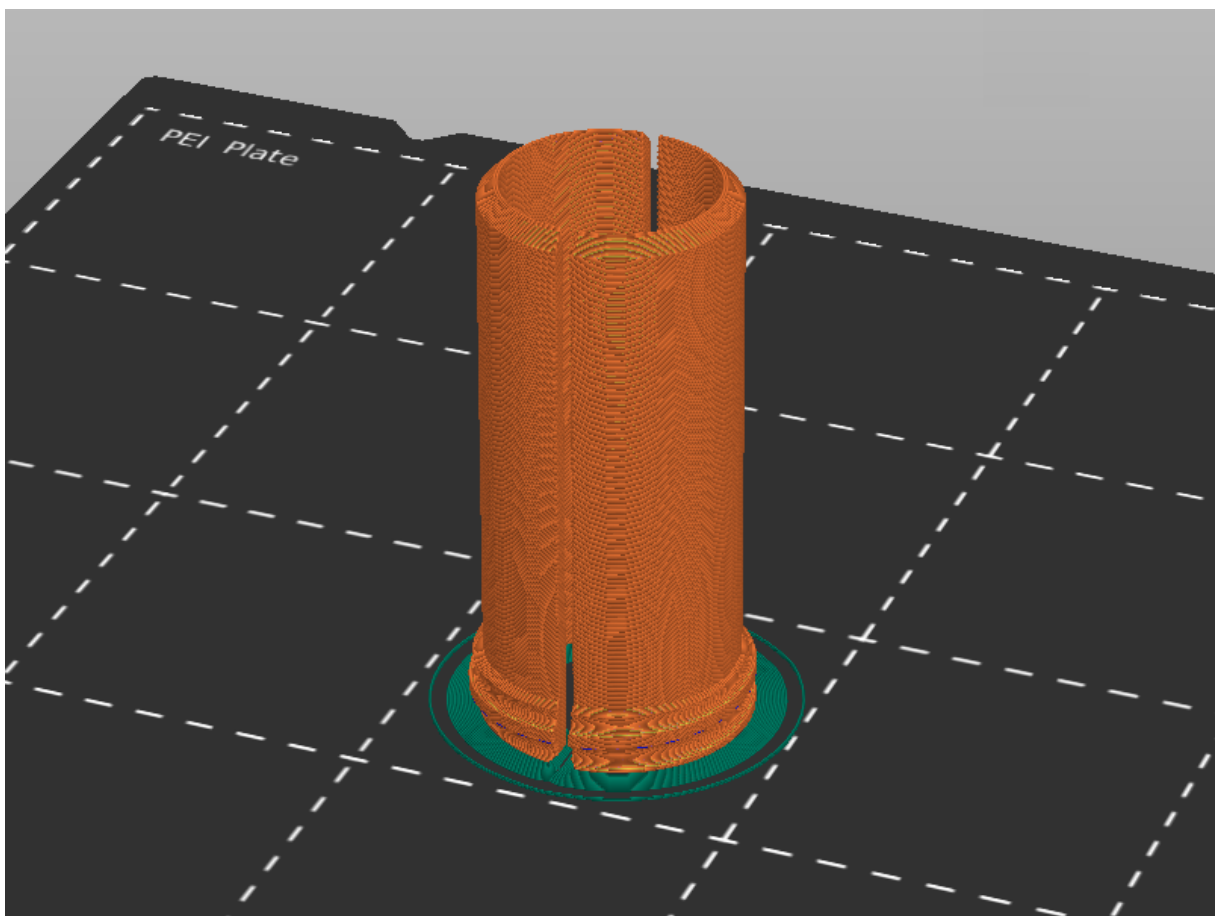
After printing, I suggest screwing the barrel and nut together in your hands a few times to work in the threads before installation onto your printer.

Slicer screenshots

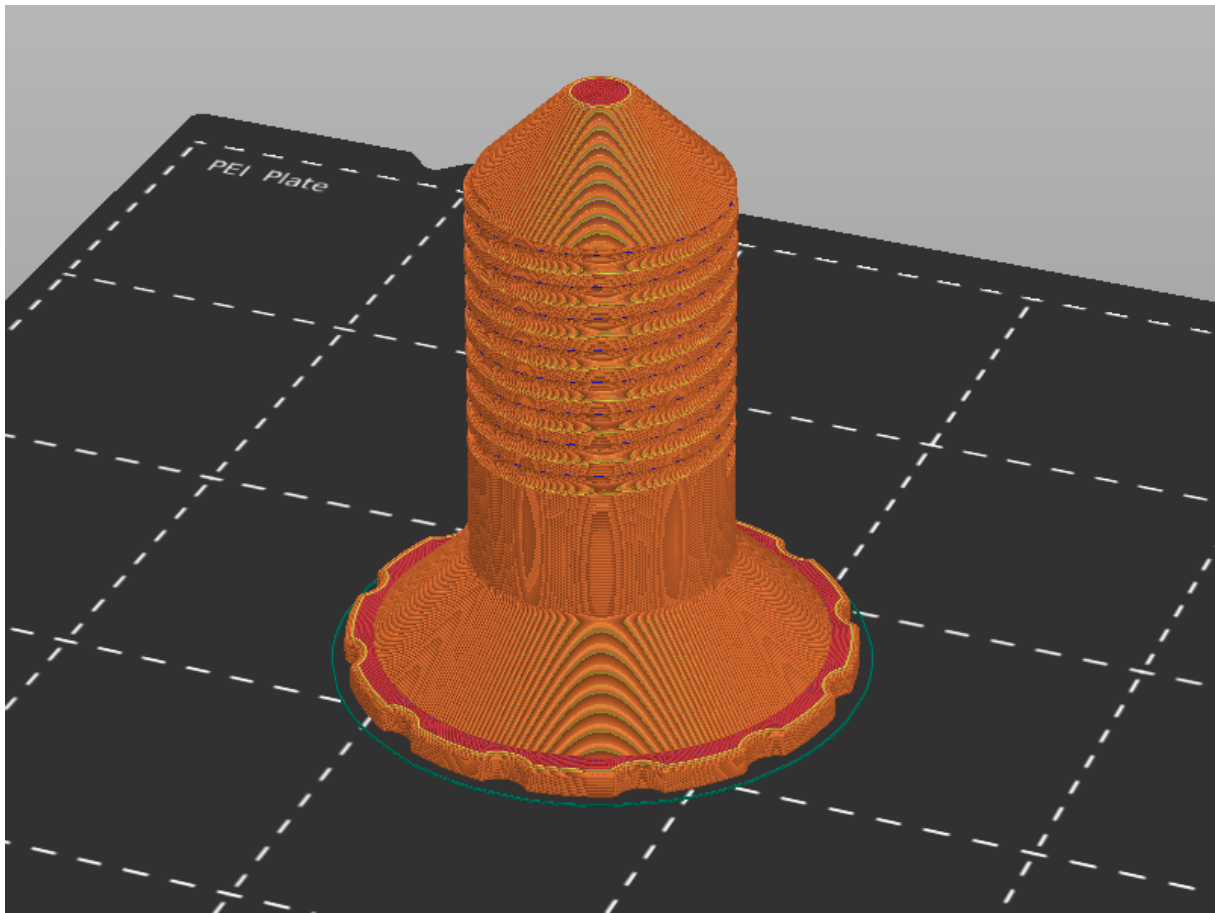
SV06 filament barrel:



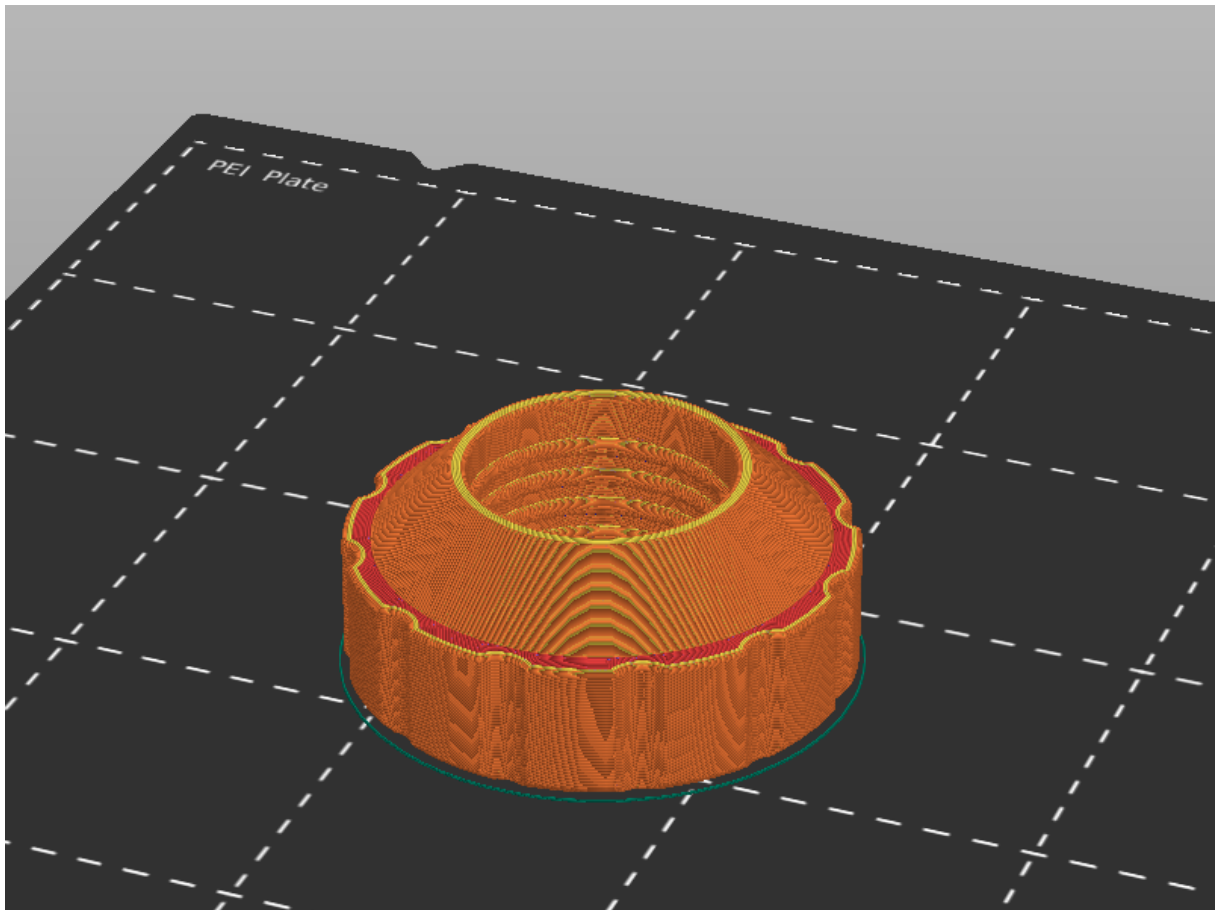
Barrel fitting:



Barrel:



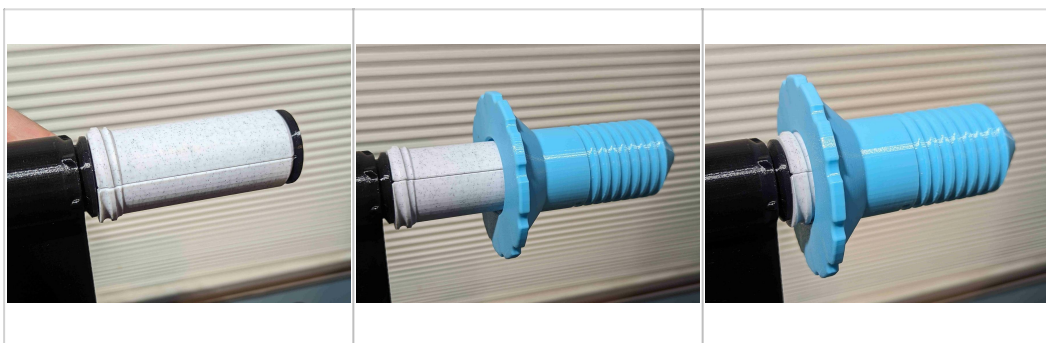
Nut:



Installation

If you have an SV06 Plus and/or want to use a printed copy of the SV06 filament barrel, remove the stock filament barrel and install the printed filament barrel.

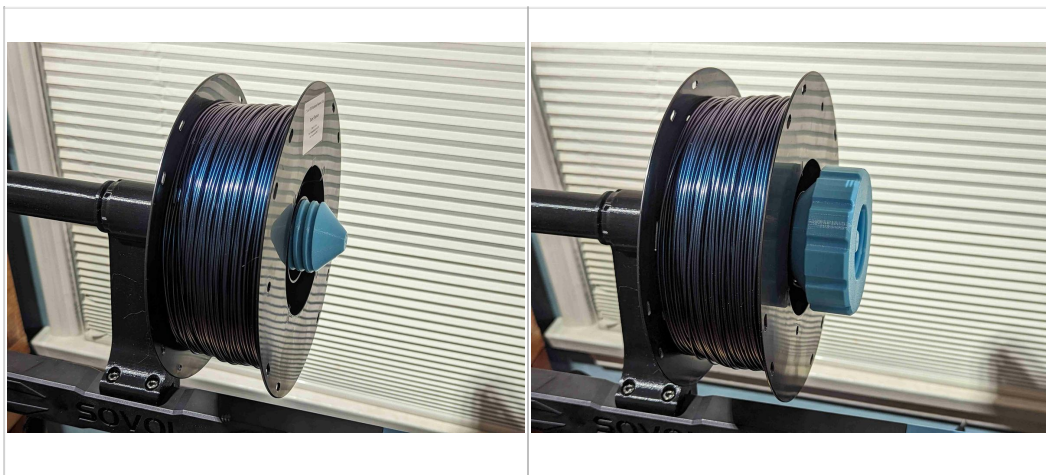
While holding both of the spool holder barrel fittings on the spool holder, slide the spool holder barrel on top of the fittings.



Hold the barrel fittings steady on their ends while twisting the spool holder onto their threads, until the barrel is flush with the fittings. I use my fingers to hold the barrel fittings steady but you may find it easier to do with a screwdriver or other tool.



Place a spool of your favorite filament on the barrel. Screw on the nut until the spool is held at the center by the chamfered ends of both the barrel and nut. The spool and spool barrel should turn freely on the SV06 filament barrel.



To change spools, simply unscrew the nut, swap out the spool, and reinstall the nut.

Remixing

I used **OpenSCAD** to create this remix. The original parts and my OpenSCAD source are all included for further remixing. There are two OpenSCAD source files:

- spool-holder.scad for the modified parts from **rogerquin's original model**
- filament-barrel.scad for the original Sovol SV06 filament barrel part, chamfered to print without supports


This remix is based on




Spool Holder for SOVOL SV06 3d printer


by rogerquin

Model files


 **models-for-printing** 4 files



spool-holder-barrel-full-size.stl
☐ Remixed barrel



spool-holder-nut-extended-size.stl
☐ Remixed nut



rogerquin-sv06-spool-holder-barrel-fitting.stl
☐ Barrel fitting from rogerquin's original model



filament-barrel-chamfered.stl

☐ Sovol SV06 filament barrel, modified to print upright without supports



source

8 files



spool-holder.scad

☐ OpenSCAD source model for the remixed spool holder parts



filament-barrel.scad

☐ OpenSCAD source model for the chamfered Sovol SV06 filament barrel



rogerquin-sv06-spool-holder-barrel.stl

☐ Barrel from rogerquin's original model



rogerquin-sv06-spool-holder-sunlu-barrel-adapter.stl

☐ Sunlu barrel adapter from rogerquin's original model



rogerquin-sv06-spool-holder-sunlu-nut.stl

☐ Sunlu nut from rogerquin's original model



rogerquin-sv06-spool-holder-nut.stl

☐ Regular-diameter nut from rogerquin's original model



rogerquin-sv06_spool_holder_extended_nut_med_res_v1.stl

☐ Extended regular-diameter nut from rogerquin's original model



sovol-sv06-filament-barrel-rotated.stl

☐ Original Sovol SV06 filament barrel, rotated

License

This work is licensed under a
Creative Commons (4.0 International License)



Attribution—Noncommercial—Share Alike

- ✗ | Sharing without ATTRIBUTION
- ✓ | Remix Culture allowed
- ✗ | Commercial Use
- ✗ | Free Cultural Works
- ✗ | Meets Open Definition