

Toggle switch guard 12mm



[VIEW IN BROWSER](#)

updated 25. 3. 2024 | published 25. 3. 2024

Summary

Secures your switch from accidentally activation. Fits 12mm toggle switches

[Hobby & Makers](#) > [Electronics](#)

Tags: [switch](#) [cap](#) [car](#) [off](#) [power](#) [cover](#) [button](#) [safety](#) [racing](#) [buttonbox](#) [aviation](#) [emergency](#) [simulator](#) [powerswitch](#) [switchcover](#) [rally](#) [cockpit](#) [flightsim](#) [homecockpit](#) [missile](#) [flightsimulator](#) [knock](#) [drivingsimulator](#) [racesim](#)

It will fit a big variety of different switches to protect. (12mm bore). It also features additional holes in the cap, in order to feed a thin wire trough. by this you have to tear the wire before using, indicating a use has taken place. This also reduces the propability of accidental activation

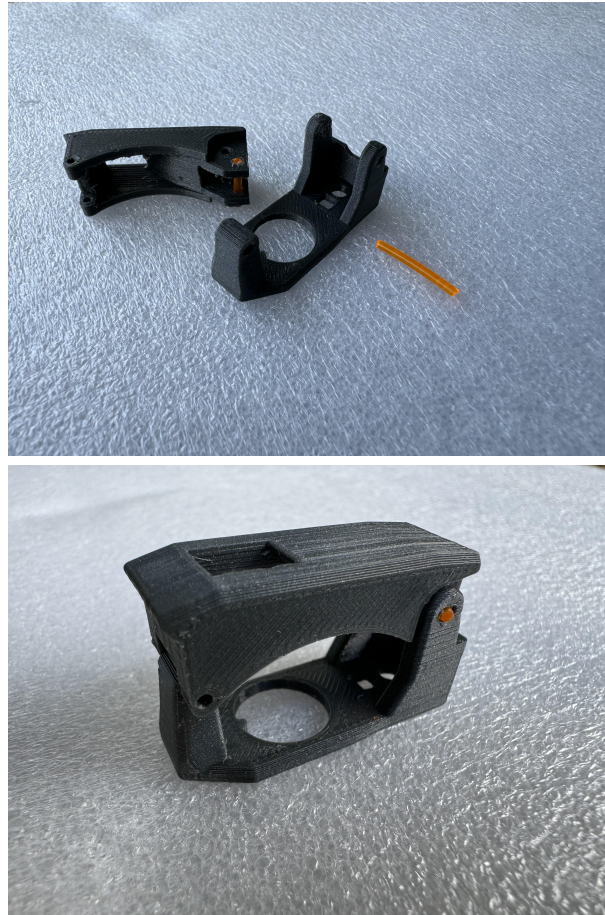
Print the cover on its side with support material enabled (only on the build plate) and the rest as you desire. PETG turned out to be robust enough as material

You might use one single M3x16 bolt and an additional pen spring for assembly. You can also use two shorter bolts to attach the cover. I like the sleek look it provides, so i chose this option. if you dont have a spring, just

tighten the bolts a little harder. You'll lack the awesome springiness of course, but it will hold the cover out of the way as well

CHANGE LOG 23.03.2024

Added a V2 for cap and base with no need for extra bolts. Just cut a piece of filament to length and feed it through. If the holes turn out to be small on your printer, make them a little wider with a 2mm drill



This remix is based on



MI: Fallout remote trigger prop

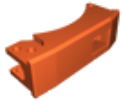
by Stefan

Model files



v2

3 files



cap_v2.stl



cap_base_v2.stl

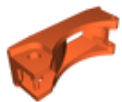


spring_holder.stl



legacy version

2 files



cap.stl



cap_base.stl

License ©

This work is licensed under a
[Creative Commons \(4.0 International License\)](https://creativecommons.org/licenses/by-nc/4.0/)



Attribution-NonCommercial

- ✗ | Sharing without ATTRIBUTION
- ✓ | Remix Culture allowed
- ✗ | Commercial Use
- ✗ | Free Cultural Works
- ✗ | Meets Open Definition